

MONTHLY MEMBERSHIP PROGRESS REPORT

LOCATION PAKISTAN

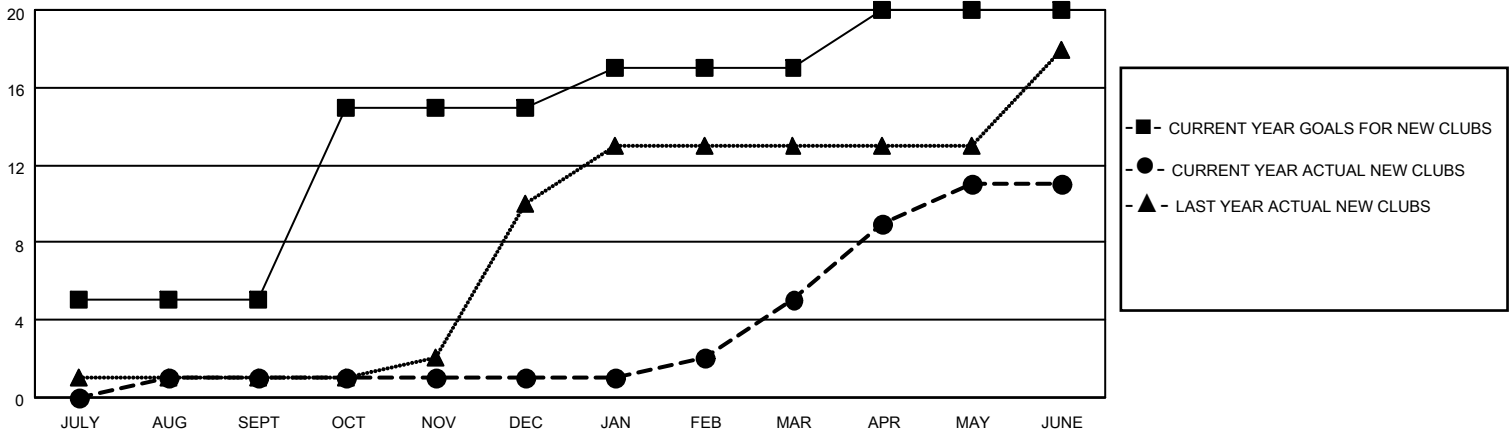
District 305 S

Results as of: 6/30/2022

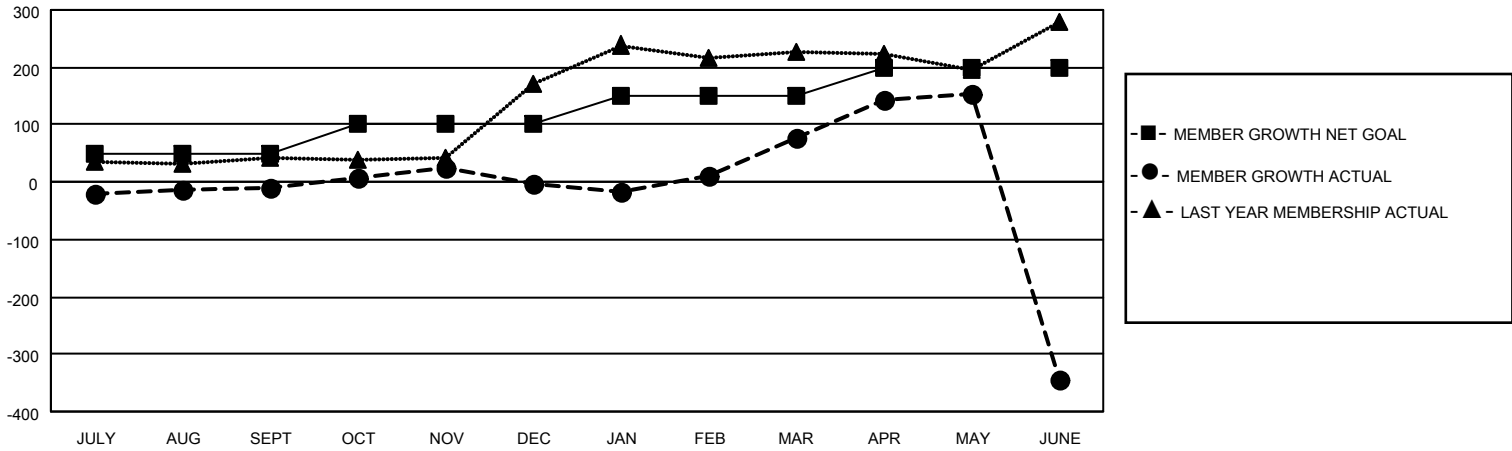
Clubs			
RESULTS FOR 2021-2022			
QUARTER	NEW CLUB GOAL	NEW CLUBS	DROPPED CLUBS
JULY/AUG/SEPT	5	1	3
OCT/NOV/DEC	10	0	1
JAN/FEB/MAR	2	4	1
APR/MAY/JUNE	3	6	2

Members			
RESULTS FOR 2021-2022			
QUARTER	MEMBER GROWTH NET GOAL	MEMBER GROWTH ACTUAL	DROPPED MEMBERS ACTUAL (including transfers)
JULY/AUG/SEPT	50	38	48
OCT/NOV/DEC	50	74	64
JAN/FEB/MAR	50	122	34
APR/MAY/JUNE	50	269	639

GOALS AND ACTUAL NEW CLUBS CUMULATIVE



GOALS AND ACTUAL MEMBERS CUMULATIVE



DROPPED CLUBS: 7

51 CLUBS OF 111 ADDED 1 OR MORE NEW MEMBERS

GENDER DISTRIBUTION

MALE	969 (70.17%)
FEMALE	412 (29.83%)
NON BINARY	0 (0.00%)
PREFER NOT TO ANSWER	0 (0.00%)

DROPPED MEMBERS

[CLICK HERE FOR CUMULATIVE MEMBERSHIP DATA](#)

DECEASED	9
CLUB CANCELLED	79
OTHER	697
TOTAL	785

TOTAL FAMILY UNIT MEMBERS 1,064

FAMILY MEMBERS PAYING HALF DUES 800